



MATERIALITY:

1. Grey facing brick to basecourse.
2. Pilestone Black Rock stock cladding (or equiv.) - Colour black.
3. Smooth proprietary render system - Colour white.
4. uPVC double glazed windows and doors to achieve U-Value 1.2w/m²k. Colour - Anthracite Grey/ RAL 7016.
5. Double glazed spandrel panel to achieve U-Value 1.2w/m²k. Colour - Anthracite Grey/ RAL 7016.
6. 950x1180mm electrically operated Velux Windows to achieve U-Value 1.2w/m²k.
7. Slatted patio.
8. Marley Modern Concrete roof tiles - Colour grey.
9. PV panels.
10. "Schüco" aluminium double glazed Bi-Fold Doors. External face finished to dark grey RAL Colour 7016. Internal face with white finish. Doors to achieve 1.4w/m²k U-value.
11. Aluminium double glazed windows and doors to achieve U-Value 1.2w/m²k. Colour - Anthracite Grey/ RAL 7016.
12. Proprietary single ply roofing membrane.

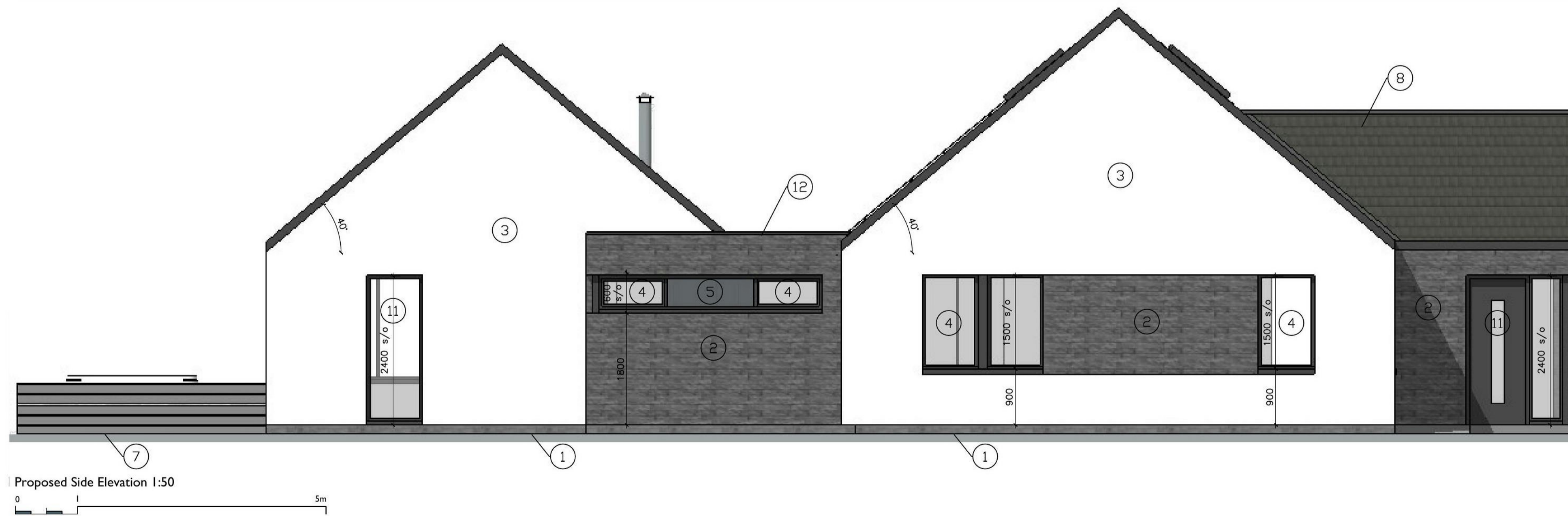
All new window cills to be precast concrete eternit colour grey.
 All new soffits, fascias & rainwater goods to be Anthracite Grey/ RAL 7016 Eurocel uPVC.

Scottish Borders Council
 Town And Country
 Planning (Scotland) Act
 1997

REFUSED

subject to the
 requirements of the
 associated Decision
 Notice

21/00045/FUL
 17/03/2021



Copyright © Architects Ltd
 2021. All Rights Reserved. No part of this document may be reproduced without the prior written permission of the copyright owner.
 The drawings for information only, shall not be used for construction purposes.

Issue stage:	PLANNING	drawn:	LP
date:	Jan-21	paper size:	A1
drawing number & revision:	20101_PL04		